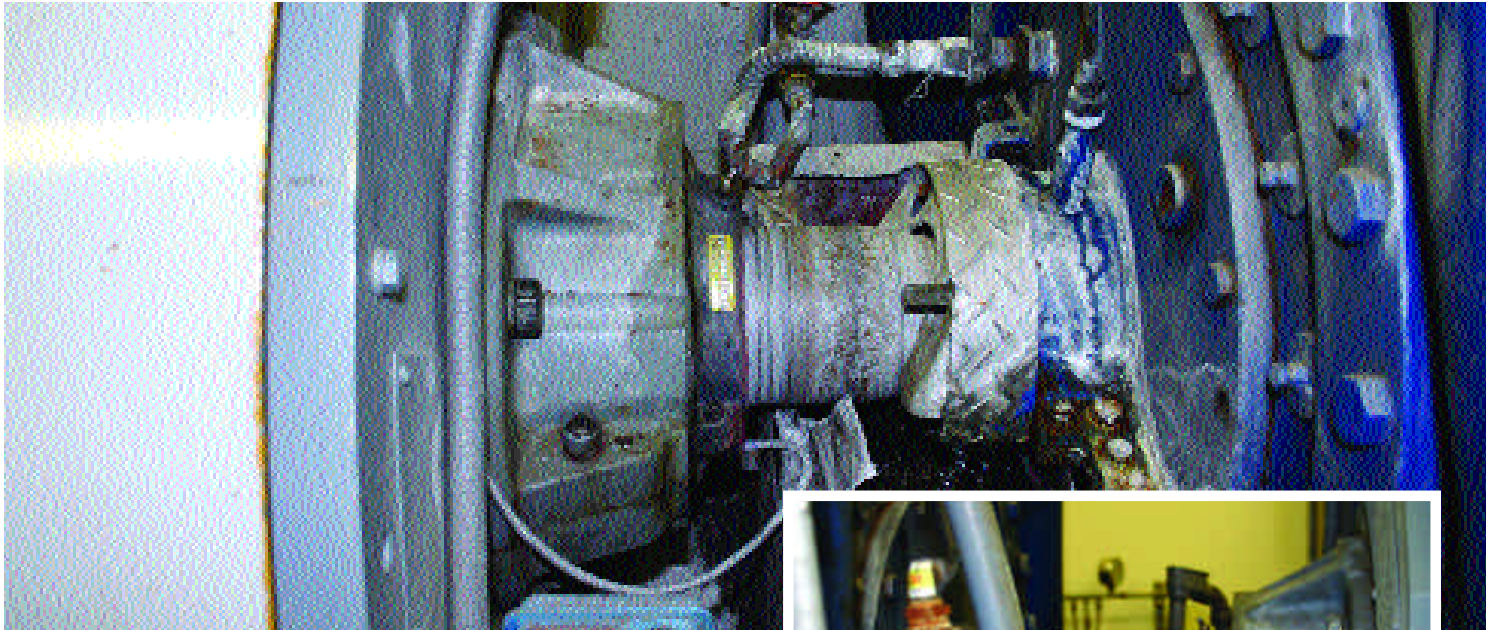


Water Resistant Easy Access Bearings



Middle Fork Irrigation District supplies irrigation water to the fruit orchards located on the slopes of Mount Hood, OR.

Here, water is converted into electricity with a Bovring turbine turning a 1200rpm Kato Generator. This application has Cooper 01BCF508EX (Expansion) bearings in a split to the shaft Flange housing.

Operating temperature is around 100° - 110°. Lubrication is Extreme Pressure HiTemp NLGI #2 grade Lithium Complex Grease.

One of the main benefits of using a Cooper split to the shaft roller bearing is shown here. The Cooper bearing permits easy access for installation and inspection without removal of adjacent equipment, or a complete plant stripdown.

In addition, the Cooper hallmark split to the shaft feature provides sealing that always remains concentric to the shaft which keeps out



This generator is installed with a Cooper 01 BCF508EX (Expansion) bearing in a flanged housing turning at about 1200rpm.

foreign matter (in this instance, water) and retains the lubrication.

Inspection and maintenance is carried out in the shortest possible time giving more uptime and less maintenance which contributes to higher efficiencies and profitability.

Customer Service Centers

USA and Mexico

The Cooper Split Roller Bearing Corp.
5365 Robin Hood Road, Suite B
Norfolk, VA 23513
USA
Telephone 757 460 0925
Fax 757 464 3067

Canada

Cooper-Grainger Canada Inc
5875 Coopers Avenue
Mississauga
Ontario L4Z 1R9
Canada
Telephone 905 890 2266
Fax 905 890 2269

UK, Africa, Asia, Australasia and the Middle East

Cooper Roller Bearings Co Ltd
Wisbech Road
King's Lynn
Norfolk PE30 5JX
England.
Telephone +44 (0) 1553 763 447
Fax +44 (0) 1553 761 113

Europe and South America

Cooper Geteilte Rollenlager GmbH
Postfach 100 423
Oberbenrader Str 407
47704 Krefeld
Germany.
Telephone + (49) 2151 713 016
Fax +(49) 2151 713 010