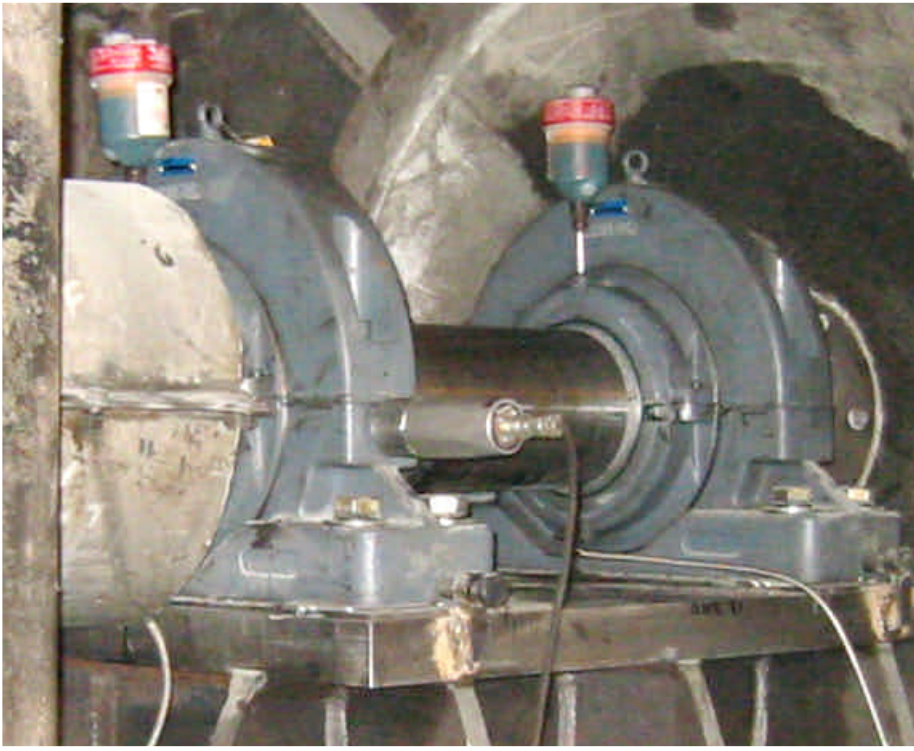


Coal Mill and Fan Combined Drive



This facility has 5 combined drive Coal Mills and Fans. All have Cooper split to the shaft bearings installed in trapped positions on the main 865 RPM drive line.

Each shaft has an 02 Series BCPM 515 EX and GR bearing. There are heavy duty BCPM (M-Line Bearing, Cartridge and Pedestal) 5¹⁵/₁₆ inch EX (Expansion) and GR (Fixed) bearings.

A harsh operating environment of a coal mill requires very effective sealing. This is achieved by using ATL (Aluminum Triple Labyrinth) seals as standard. The Cooper cartridge allows plus or minus 2.5 ° misalignment, the seals always remain concentric to the shaft. This feature retains lubrication and keeps out contaminants thereby providing optimum bearing life.

Cooper split bearings assemble from easy to manage components which typically do not require crane hire for most standard sizes. This benefit permits easy, cost effective assembly in trapped bearing locations.

One of the main benefits of using a Cooper split to the shaft roller bearing is shown here. The Cooper bearing permits easy access for installation and inspection without removal of adjacent equipment. or a complete plant stripdown.

Inspection and maintenance is carried out in the shortest possible time giving more uptime and less maintenance which contributes to higher efficiencies and profitability.

Customer Service Centers

USA and Mexico

The Cooper Split Roller Bearing Corp.
5365 Robin Hood Road, Suite B
Norfolk, VA 23513
USA
Telephone 757 460 0925
Fax 757 464 3067

Canada

Cooper-Grainger Canada Inc
5875 Coopers Avenue
Mississauga
Ontario L4Z 1R9
Canada
Telephone 905 890 2266
Fax 905 890 2269

UK, Africa, Asia, Australasia and the Middle East

Cooper Roller Bearings Co Ltd
Wisbech Road
King's Lynn
Norfolk PE30 5JX
England.
Telephone +44 (0) 1553 763 447
Fax +44 (0) 1553 761 113

Europe and South America

Cooper Geteilte Rollenlager GmbH
Postfach 100 423
Oberbenrader Str 407
47704 Krefeld
Germany.
Telephone + (49) 2151 713 016
Fax +(49) 2151 713 010